



Quick drain Valve Air operated quick drain valve

FVAQ

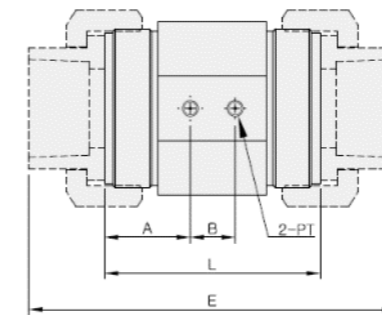
How to order 주문 방법

FVAQ □ □ □ - □ □ - □ □
① ② ③ ④ ⑤

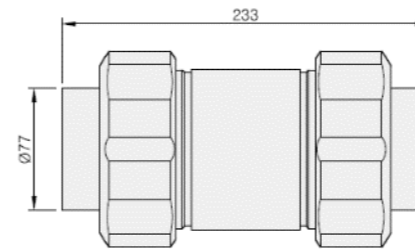
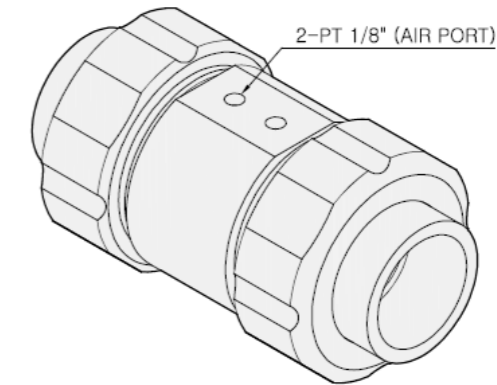
① Model	② Body	③ Operating	④ Connection	⑤ O-Ring
20	V : PVDF	D : Double Acting	U : Union	V : VITON
25	P : PVC		P : FPT	E : EPDM
32	F : PTFE		F : Flange	F : ETP(Acid-resistance)
40	C : CPVC		N : NPT	K : FFKM
50				N : NBR
65				
75				

Dimension 치수

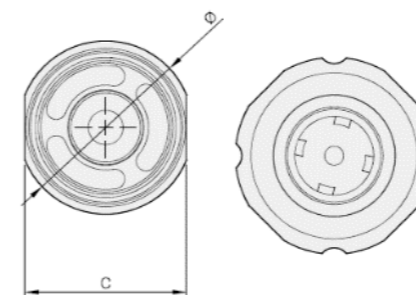
설계 치수는 영업부에 문의 또는 승인도를 요청 바랍니다. 상기 치수는 변경될 수 있습니다.
For exact size of each item. Please contact Sales Dept. Above-mentioned dimensions are changeable.



Front View



Top View



Side View

MODEL	L	A	B	C	Ø	E	PT
20A	68.5	26.5	16	56	60	139	1/8"
25A	68.5	26.5	16	56	60	140	1/8"
32A	86	30.5	20	71	79	176	1/8"
40A	117	43	23	83	89	200	1/8"
50A	137	58	27	132	140	233	1/8"
65A	206	79	32	140	150	344	1/8"
75A	260	113.5	47	158	168	404	1/8"

Specification 사양

Fluid	Chemical, DI water
OP. Temp	5 ~ 80°C (PVC : 40°C)
OP. Press(ordinary)	0 ~ 0.2 MPa
OP. Press(reverse)	0 ~ 0.2 MPa
Operate	Double Acting
Air press	0.4 ~ 0.6 MPa
사용 유체	Chemical, DI water
사용 온도	5 ~ 80°C (PVC : 40°C)
사용 압력(정)	0 ~ 0.2 MPa
사용 압력(역)	0 ~ 0.2 MPa
조작 방법	복동 조작
작동 압력	0.4 ~ 0.6 MPa

General 개요

FVAQ series is valve for piping inline, for quick drain. Orifice size is the same as the pipe so, it can drain full flow quickly and it's easy to install with union connection.

Inline 배관용 valve로 drain lined의 대유량 유체의 급속 배기용입니다. 배관 size와 동일한 valve의 orifice size는 대유량을 신속히 배출하며, union connection으로 배관이 간편합니다.

Features 특징

- PVC wetted parts
- Quick drain for chemical & water
- Union, PT connection
- 1"(25A) ~ 3"(75A) piping size
- Valve acting by air

- PVC 접액부
- Chemical, water의 급속 배기용
- Union, PT connection
- 1"(25A) ~ 3"(75A) 배관 size
- Air 구동의 밸브 동작

Applications 사용 분야

- Chemical supply system
- Wet station의 drain valve
- Tank drain valve
- In-line용 valve