

FLUCON

Conductivity meter

CR-100A

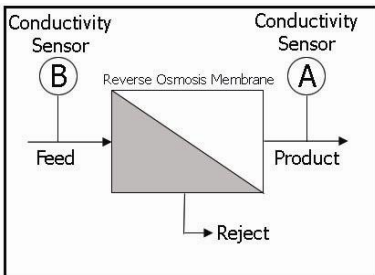
Measuring range : 0~200 μ S/cm



► SPECIFICATION

1. Monitor

- Channel : 1 channel
- Accuracy : $\pm 1\%$ full scale
- Output : 1CH 4~20mA(option)
RS 232(option)
- Relay : SPDT(Hi, Lo)
AC 110~220V 3A
- Power : AC only(110V or 220V)
- Conductivity
Range : 0~200 μ S/cm
0~20 μ S/cm (Option)
0~2000 μ S/cm (Option)



2. Cell

- Connector : 1/2"PT(M)
- Max. Pressure : 0.5Mpa
- Max. Temp. : 50 $^{\circ}$ C
- Material :
Electrode : 316SS
Fitting : Polypropylene
- Temp. Compensation
: Pt1000 @25 $^{\circ}$ C

► APPLICATIONS (적용분야)

- Pure water system
- Pharmaceuticals
- Laboratories
- Food processing
- Electronics
- LCD

► ORDERING INFORMATION (주문방법)

1. Monitor

CR 100A - -
 ① ② ③

① Channel	② Power(AC only)	③ Output
1 : 1CH	A : 110V~220V AC (Selectable)	1 : SPDT relay 2 : 4~20mA 3 : RS 232

2. Cell

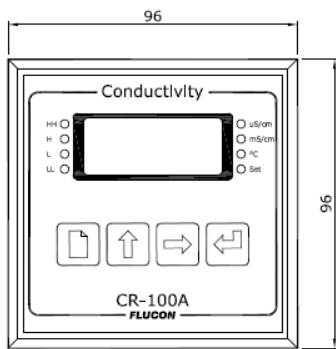
CE 20 -

Cable
L3 : Cable 3m
L* : Request Length

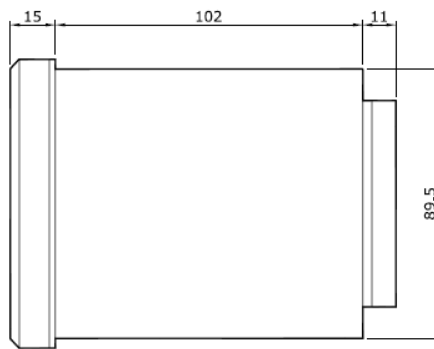
▶ DIMENSION

설계치수는 영업부에 문의 또는 승인도를 요청바랍니다. 상기 치수는 변경될 수 있습니다.

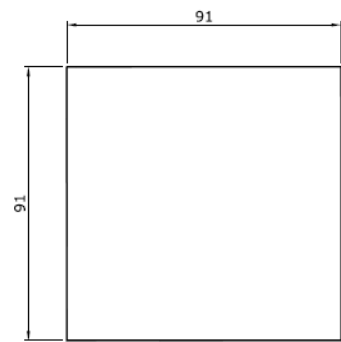
For exact size of each item, Please contact Sales Dept. Above-mentioned dimensions are changeable.



(FRONT VIEW)



(SIDE VIEW)



(PANEL CUTTING DIMENSION)